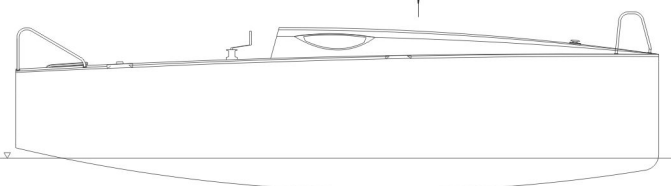
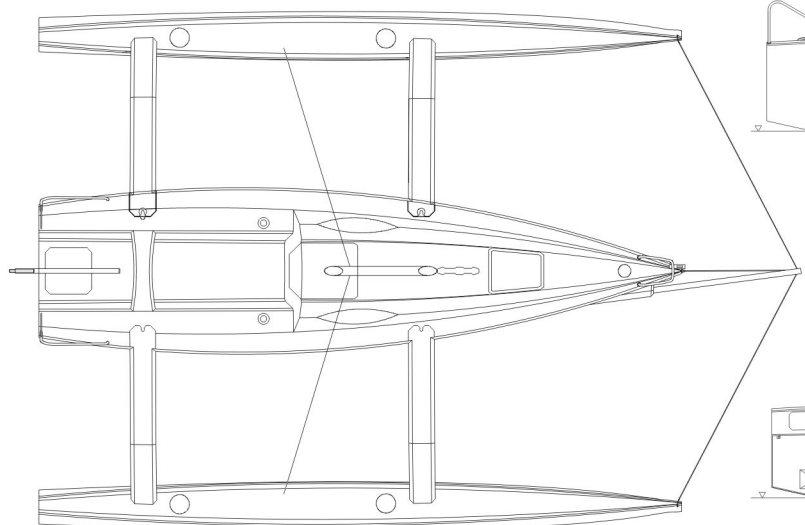
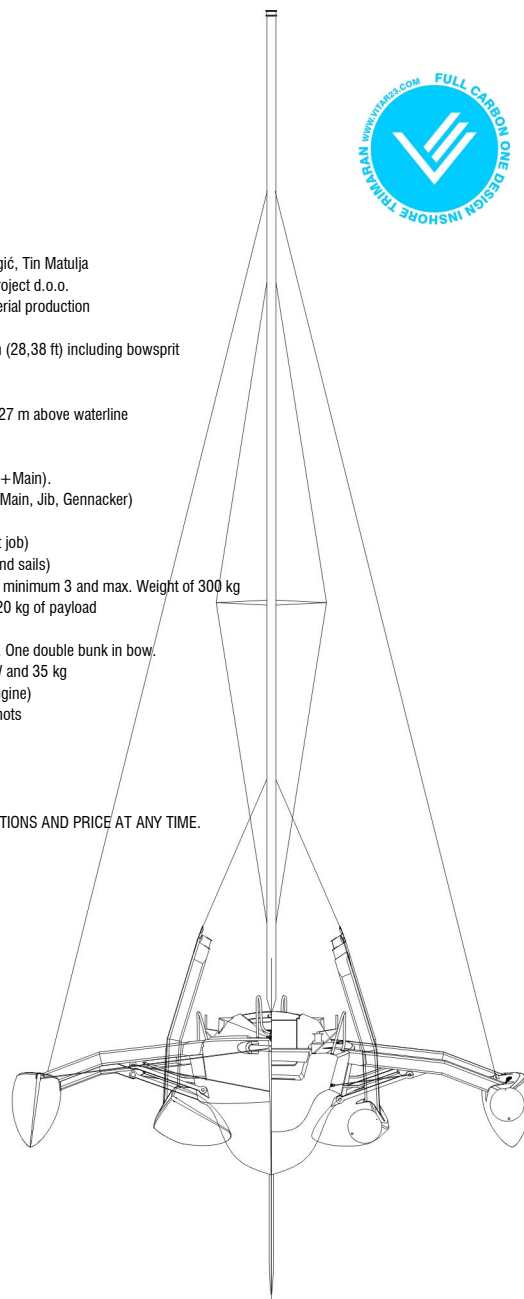
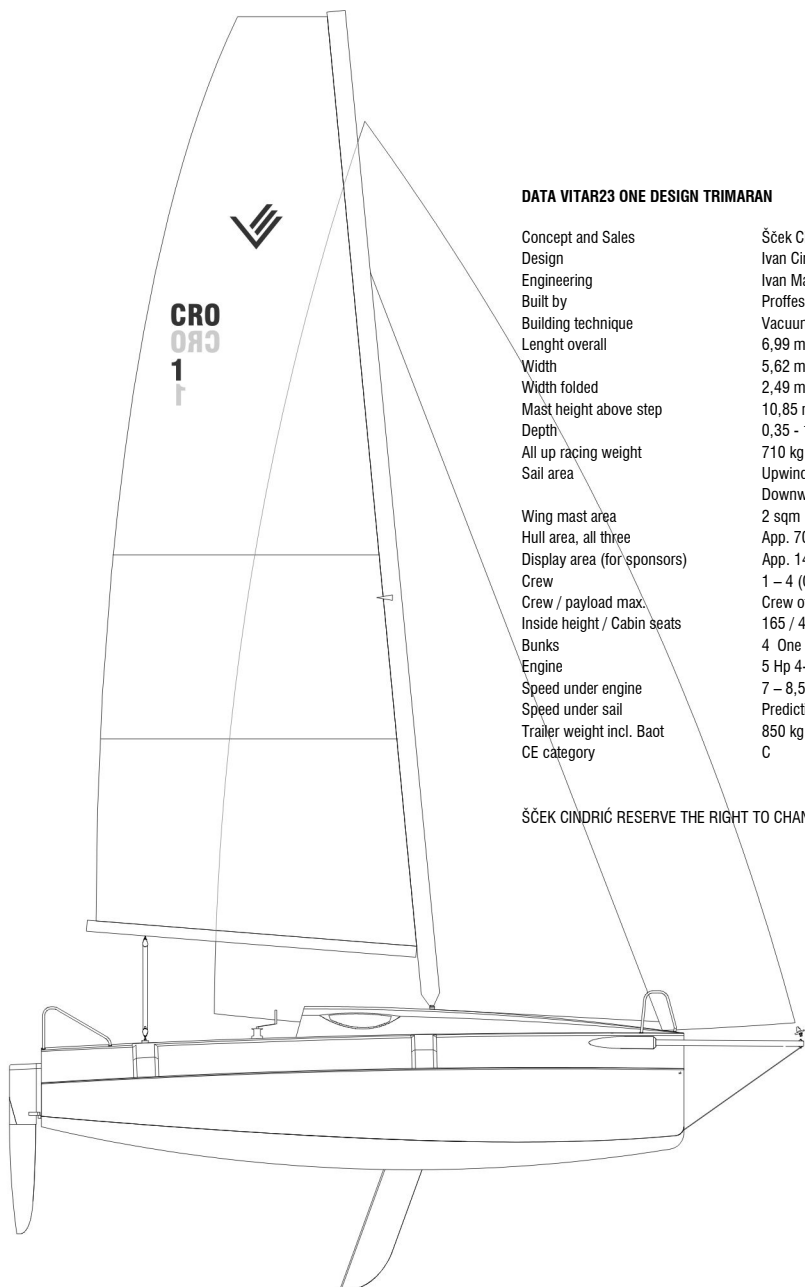




DATA VITAR23 ONE DESIGN TRIMARAN

Concept and Sales	Šček Cindrić d.o.o.
Design	Ivan Cindrić, Ivan Margić, Tin Matulja
Engineering	Ivan Margić, Margić project d.o.o.
Built by	Professional builder, serial production
Building technique	Vacuum infusion
Length overall	6,99 m (23 ft), 8,65 m (28,38 ft) including bowsprit
Width	5,62 m (18,4 ft)
Width folded	2,49 m (8,17 ft)
Mast height above step	10,85 m (35,6 ft), 12,27 m above waterline
Depth	0,35 - 1,54 m
All up racing weight	710 kg ex. crew
Sail area	Upwind 35,7 sqm (Jib + Main). Downwind 73,3 sqm (Main, Jib, Gennacker)
Wing mast area	2 sqm
Hull area, all three	App. 70 sqm (for paint job)
Display area (for sponsors)	App. 140 sqm (hulls and sails)
Crew	1 - 4 (OD rule crew of minimum 3 and max. Weight of 300 kg)
Crew / payload max.	Crew of 300 kg and 120 kg of payload
Inside height / Cabin seats	165 / 4
Bunks	4 One double in stern. One double bunk in bow.
Engine	5 Hp 4-stroke, 3,7 kW and 35 kg
Speed under engine	7 - 8,5 knots (5 Hp engine)
Speed under sail	Prediction above 25 knots
Trailer weight incl. Baot	850 kg
CE category	C

ŠČEK CINDRIĆ RESERVE THE RIGHT TO CHANGE SPECIFICATIONS AND PRICE AT ANY TIME.



RACING CREW OF 4 MAX 300 KG
CHARTER, CRUISING MAX CREW OF 6 WHEN NOT FOLDED



>> RIG AND SAIL DIMENSIONS ARE NOT EXACT ENOUGH TO BE MEASURED FROM.<<